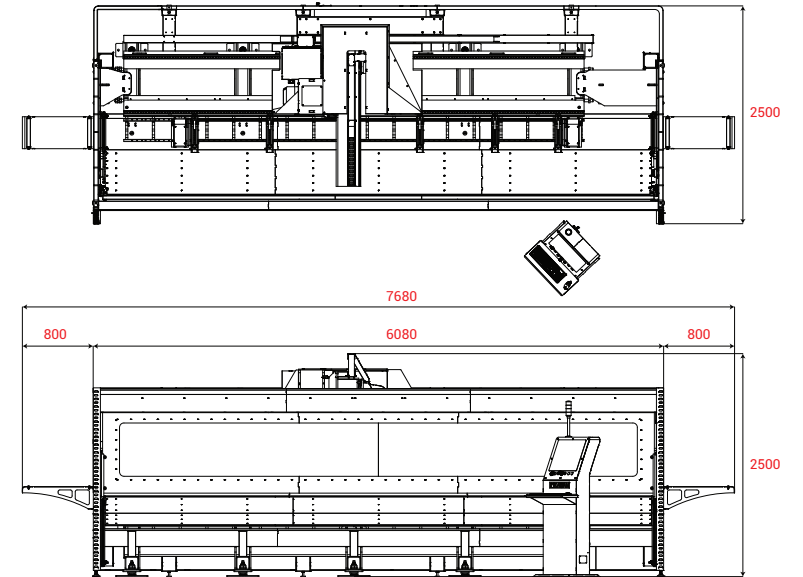
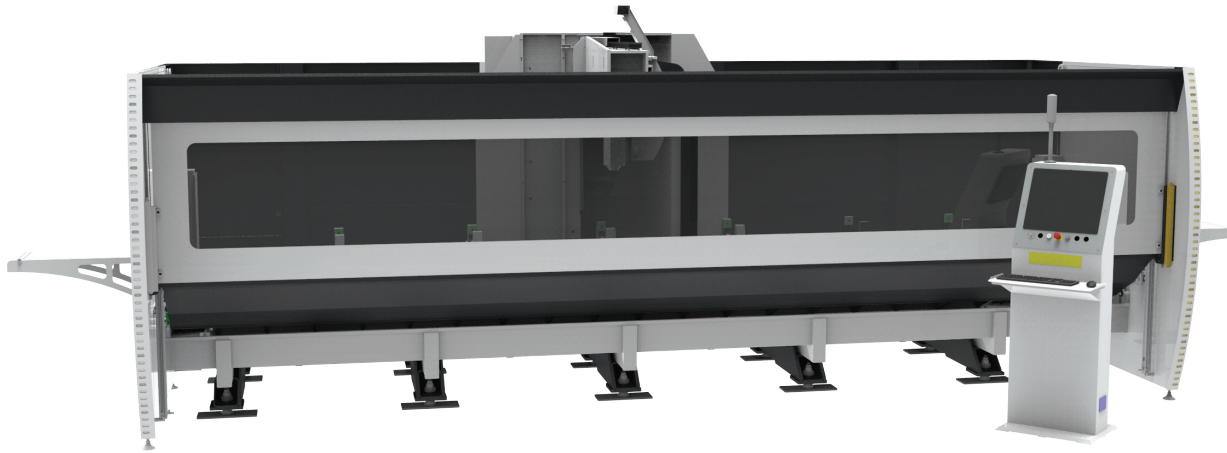


ZC 4030

3 Axis Aluminium Machining Center

ZC 4040

4 Axis Aluminium Machining Center



General Features

- Standard model has 6 clamps and tool chuck with 8 tool holding capacity.
- In order to ensure continuous precision, stress relieving method is applied in cast and welded pieces.
- The absence of any material that could be damaged in the areas where sawdusts and wastes fall provides a long life.
- Profile sliding convenience on clamp surface since the surface where profile seats on is roll system.
- Automatic positioning of clamps with servo control according to receipts on a piece for machining.
- Automatic recovery of working shaft from profile by means of a program in case of power outage.
- Long-life moving parts with automatic lubrication system.
- Robust Mechanical Design suitable for high speed and acceleration.
- Easy to use and flexible operating system and interface.
- Machine management ensuring high performance.
- Periodical maintenance reminder function.
- Easy adjustment of parameters.
- Service support via remote connection.
- Mitsubishi CNC M720VW control unit, internal HDD, optical communication, high speed and precision, 0.001mm command increment and Ethernet.

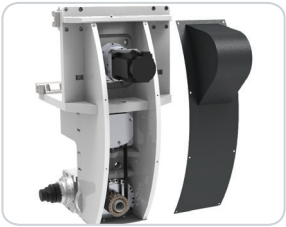
ZC 4030

400 V (50-60 Hz) (kW)	6-8 bar (t/dk)	kg	W x L x H (mm)	L (min.) x L (max.) (mm)	a x h (mm)	ØD x Ød x b (mm)	X x Y x Z (mm)
19	300	6700	7680 x 2500 x 2500	— x 4160	300 x 300	200 x 32 x 2	4385 x 1250 x 590

ZC 4040

400 V (50-60 Hz) (kW)	6-8 bar (t/dk)	kg	W x L x H (mm)	L (min.) x L (max.) (mm)	a x h (mm)	ØD x Ød x b (mm)	X x Y x Z (mm)
19	300	6700	7680 x 2500 x 2500	— x 4160	300 x 300	200 x 32 x 2	4385 x 1250 x 590

Spindle



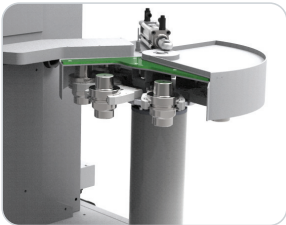
- Hiteco branded, thermostat sensor and liquid cooled 8.5 kW max. 24.000 rpm spindle.
- Tool cooling system with oil-air mixture spraying, speed adjustment and liquid level sensor.
- HSK tool holder and tool holder cleaning system.
- Tool change security protocols written to reduce operator errors as much as possible.

Control Panel



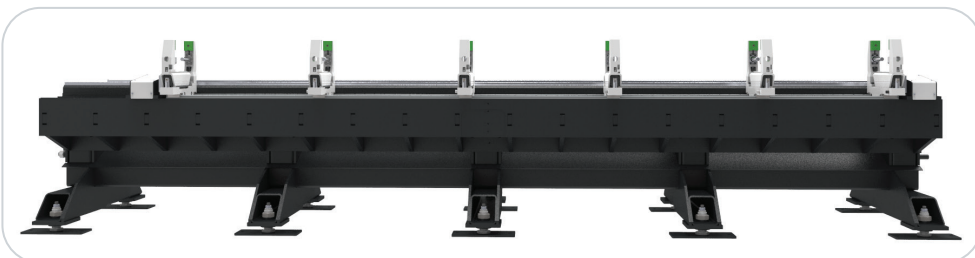
- Easy to use and flexible operating system and interface.
- Mitsubishi FX-5 control unit.
- Numerical processing with G-Code transferred from CAD-CAM software.
- It communicates with programs that extract .ncx files.
- High performance machine management.
- Easy parameter settings.
- It has periodic maintenance reminder function.
- Service support with remote connection.
- Usb and Com Port input.

Magazine



- 8 tool capacity magazine.
- Tool change feature in 8 seconds.
- Time saving by changing the tool when passing from one operation to another one on the piece.

Clamps



- The standard module has 6 clamps.
- Roller system of the surfaces where the profile is placed provides the comfort of profile sliding.
- According to the receipts on the workpiece, the clamps receive servo-controlled automatic position.
- Easy piece referencing with double-sided profile support system.
- Long length profile processing is available. With Ø200 mm saw blade, it makes milling from the ends of the profiles.
- Thanks to the pressure regulator, the clamp tightness can be adjusted according to the profile thickness.

ZC 4030

Motor Specifications	Power (kW)	Motor Speed (rpm)	Angular Speed (°/dk)	Axis Speed (m/dk)	Reductor
Spindle Motor (Hiteco QX-2 8.5)	8,50	24000			
X Axis Servo Motor	3,50	3000		192	PSFN 140 - i=7
Y Axis Servo Motor	0,75	4000		72	PSFN 90 - i=20
Z Axis Servo Motor	0,75	4000		40	
A Axis Servo Motor	-	-	-	-	-
Magazine Servo Motor	0,40	4000			SD090-P2 i=70

ZC 4040

Motor Specifications	Power (kW)	Motor Speed (rpm)	Angular Speed (°/dk)	Axis Speed (m/dk)	Reductor
Spindle Motor (Hiteco QX-2 8.5)	8,50	24000			
X Axis Servo Motor	3,50	3000		192	PSFN 140 - i=7
Y Axis Servo Motor	0,75	4000		73	PSFN 90 - i=20
Z Axis Servo Motor	0,75	4000		40	
A Axis Servo Motor	0,75	4000	180		Spinea i115
Magazine Servo Motor	0,40	4000			SD090-P2 i=70

UTILITY MODEL DOCUMENT / NO: TR 2014 01271 Y

This document has been issued for 10 years from 04.02.2014 pursuant to article 162 of the Decree Law on Protection of Patent Rights No. 551.